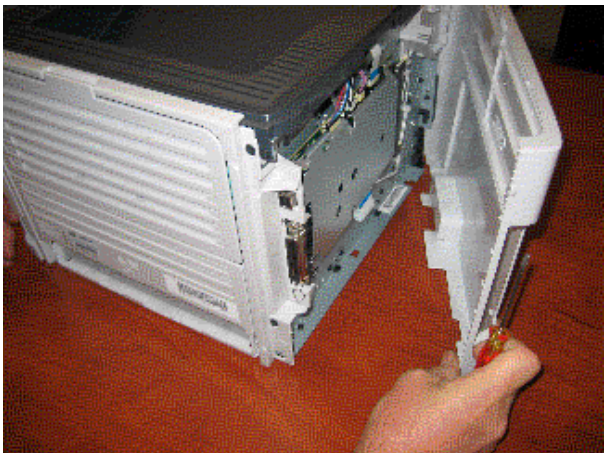


HP 1320 Fuser Install Instructions



From Rear of machine ,
remove left cover by
popping open cover from
top and bottom.



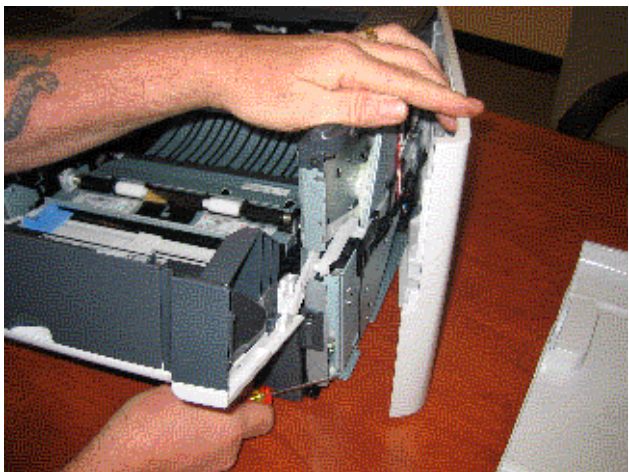
Move cover away, then
move forward.



Open Front toner door.



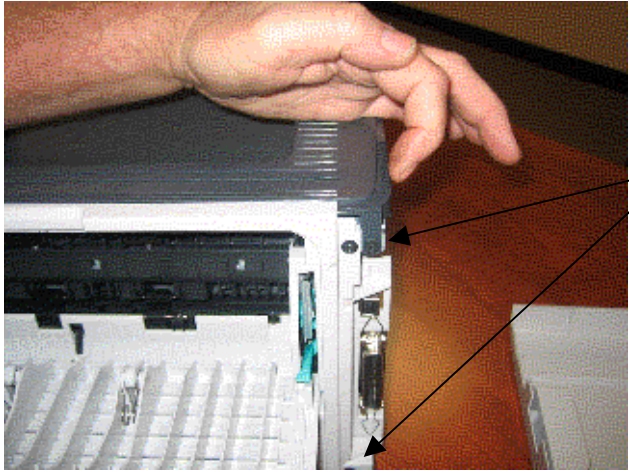
Move away right side cover from top and bottom of side cover.



Move the cover away then push back to remove.



Move down both left and right pressure roller levers.



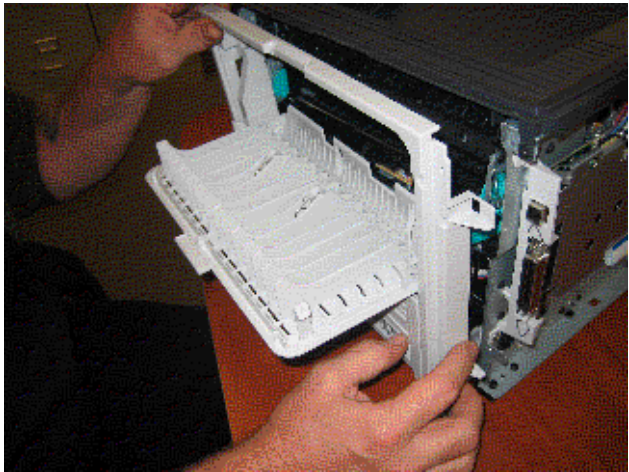
Remove screws from top & bottom of right side of fuser cover.



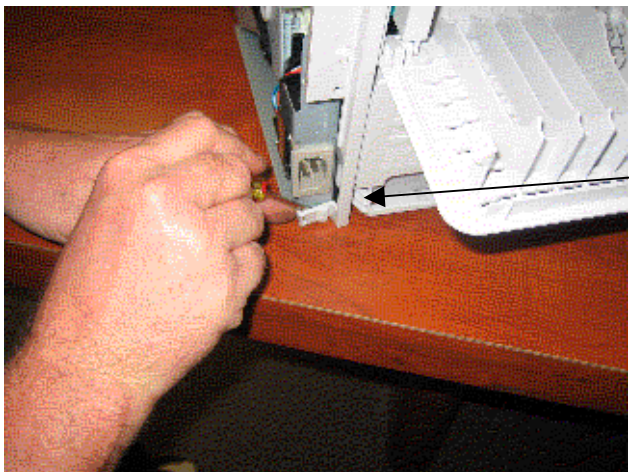
Remove screws from top & bottom of left side of fuser cover.



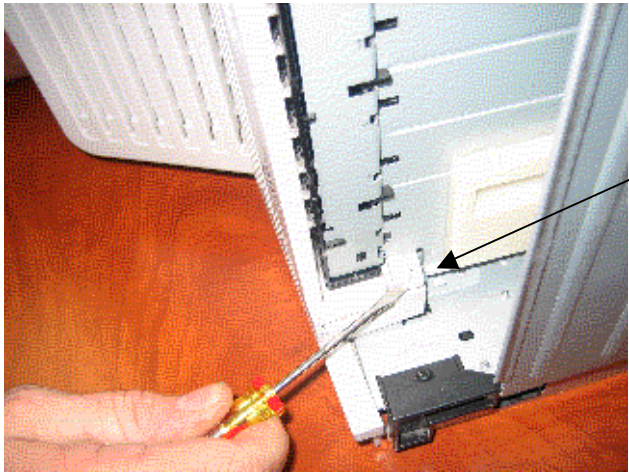
Move away top of rear cover.



Move away right side of rear cover.



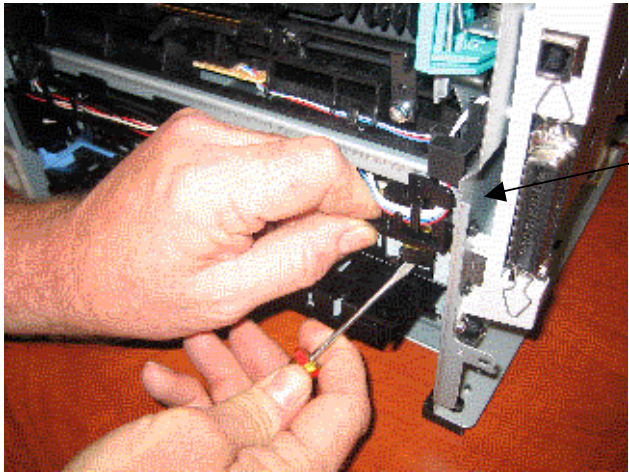
Move tab away (lower left) and turn machine on left side.



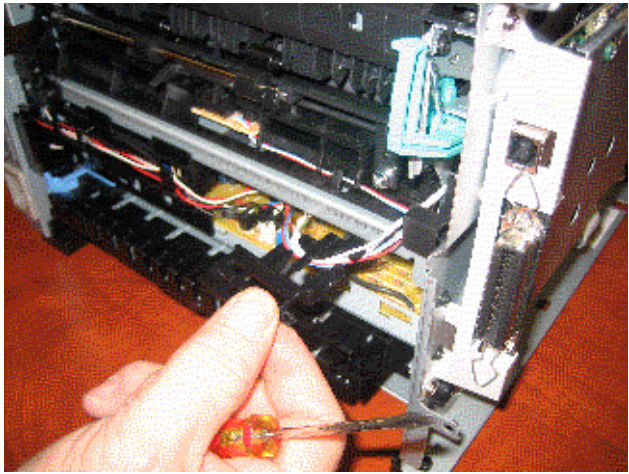
Move lock tab from pin
and move rear cover
away from machine.

Continue to next page

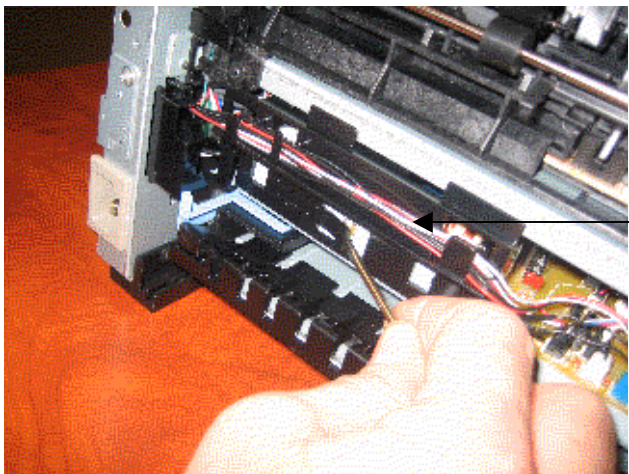




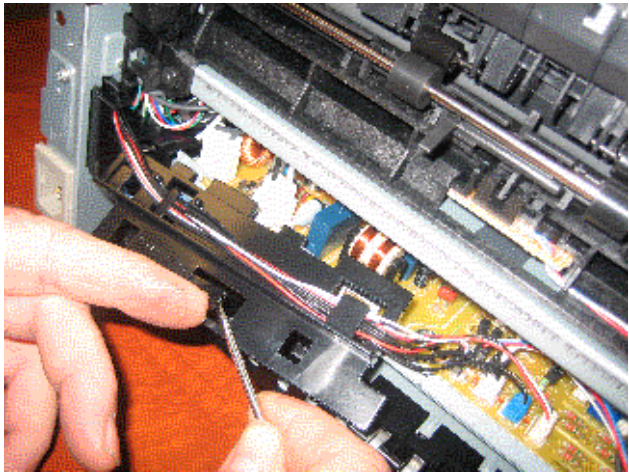
Remove Harness guide by lifting the black tab, and sliding it to the left.



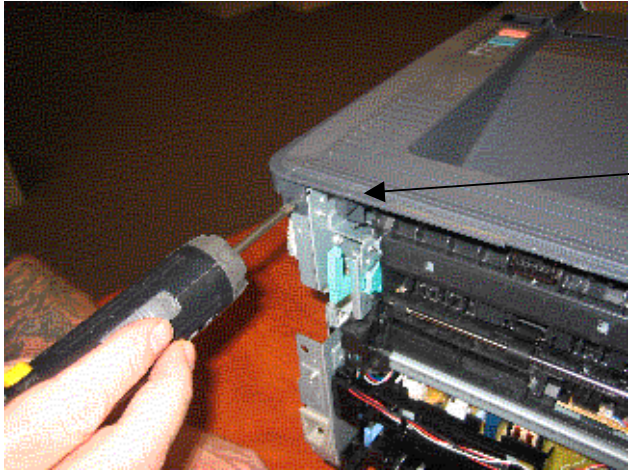
Move harness guide away from machine.



Lift tab on left side harness guide and move guide to right.



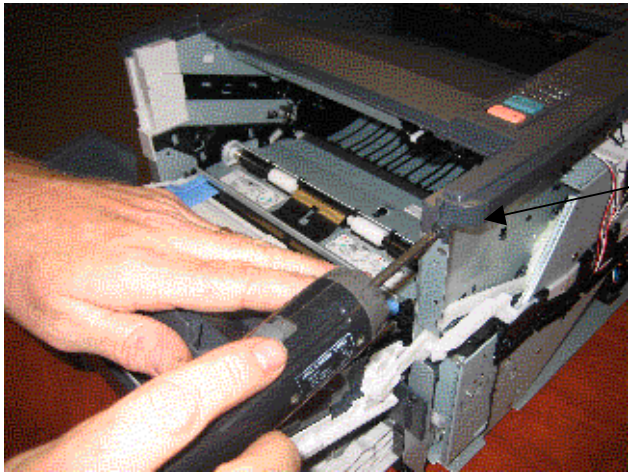
Lay guide down, away from machine.



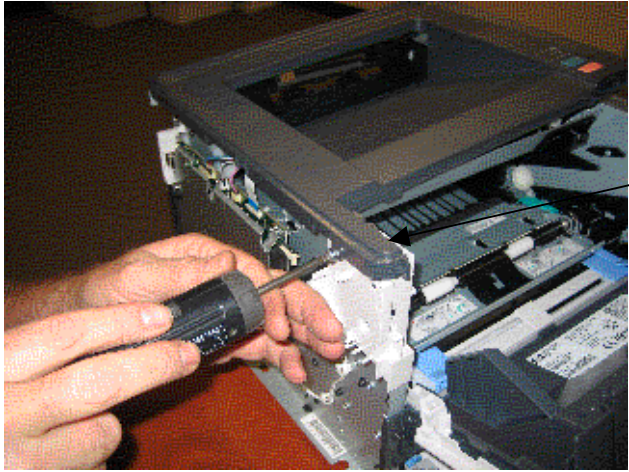
Remove top screw on left rear.



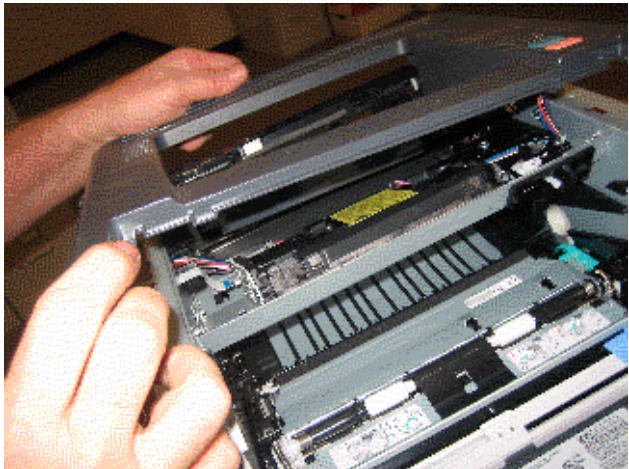
Remove top screw on right rear.



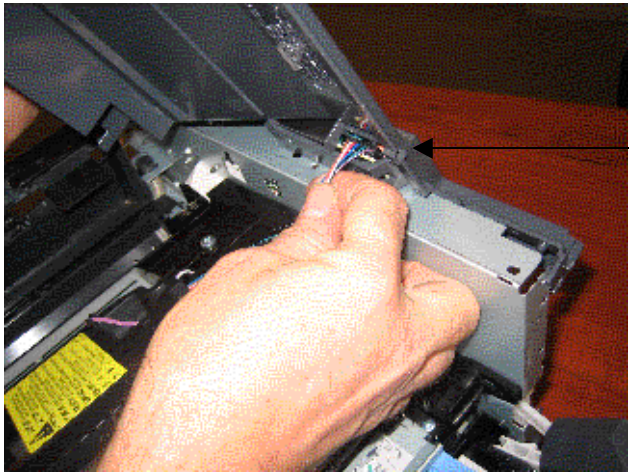
Remove right front top screw.



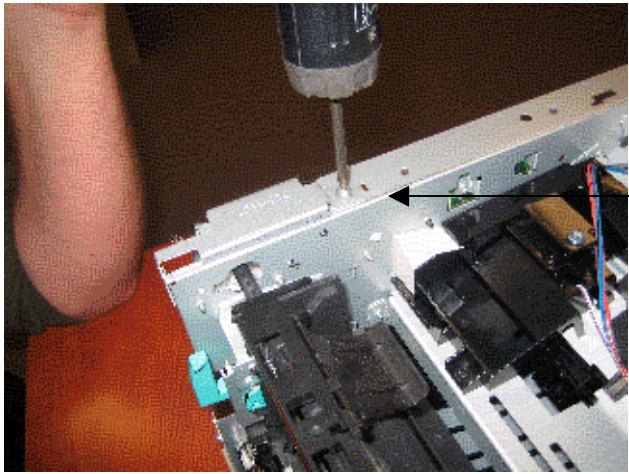
Remove left front top screw.



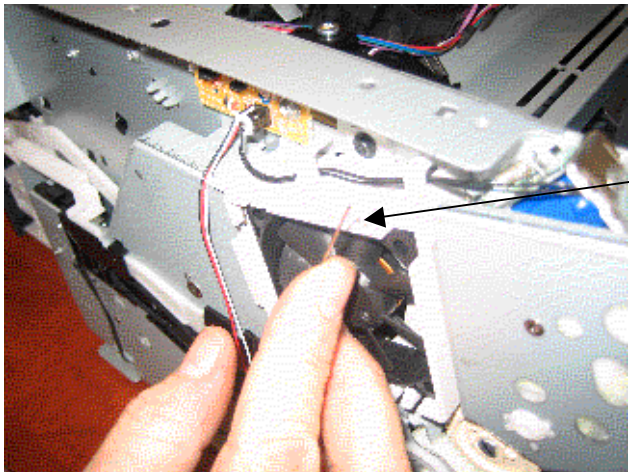
Lift top cover and find operational panel harness connection.



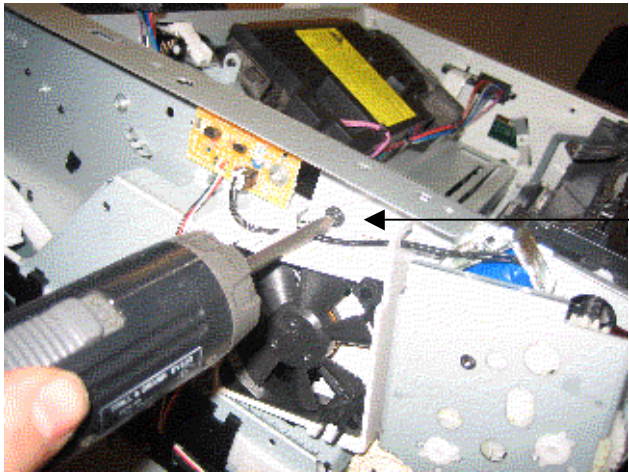
Remove top operational panel harness from panel.



Remove screw from left rear top fuser cover drive cover.



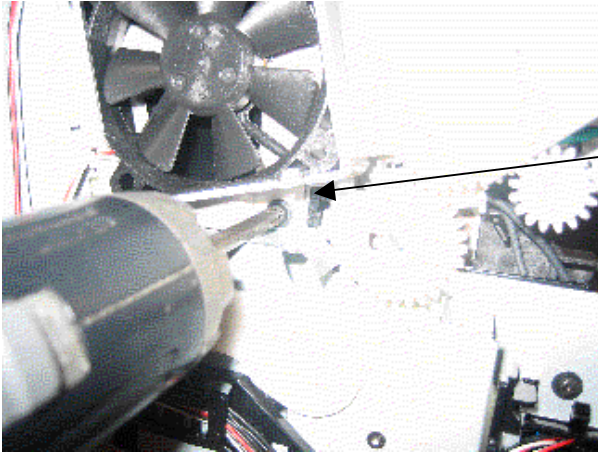
Remove far stay spring rod from face of fan.



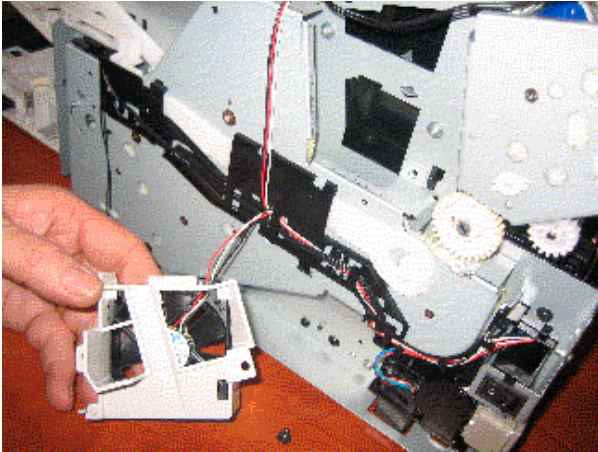
Remove fan housing top screw.

Continue to next page

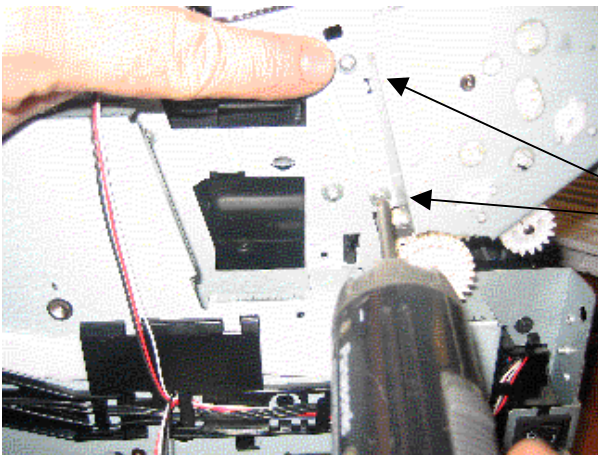




Remove fan housing
lower screw.



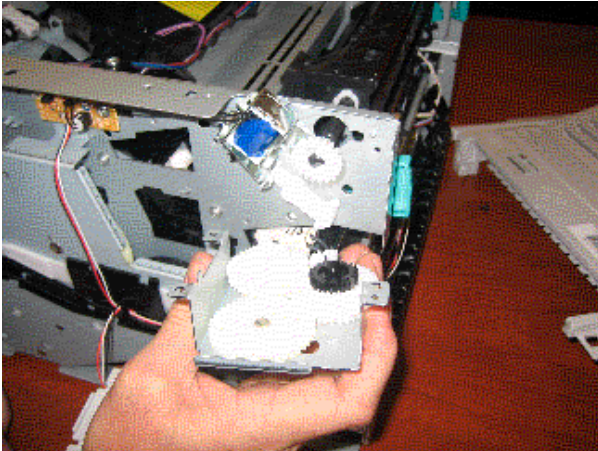
Remove fan and housing,
set off to the side.



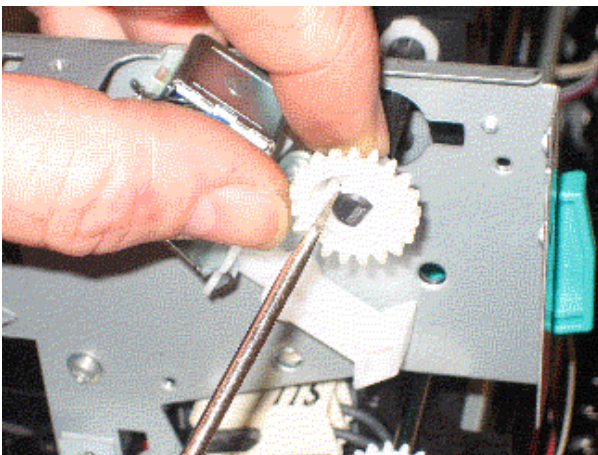
Remove gear drive left
side screws.



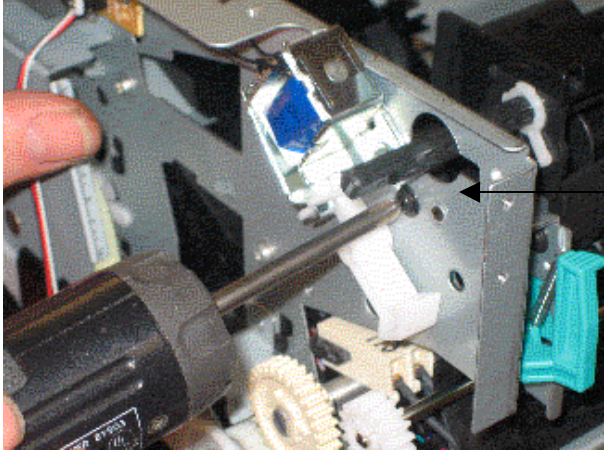
Remove right side screw from fuser drive assy.



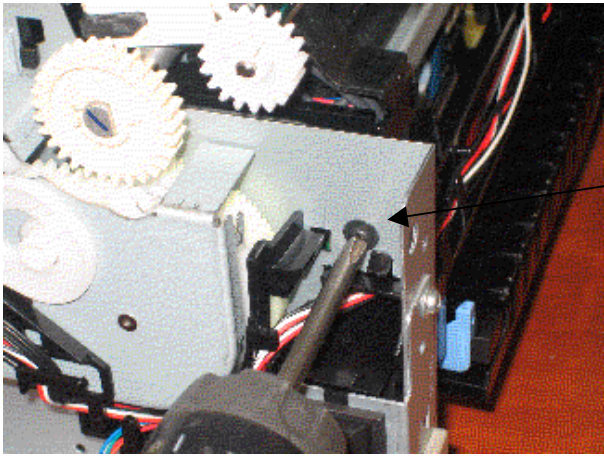
Be careful not to drop gears out of housing. Set face up on table.



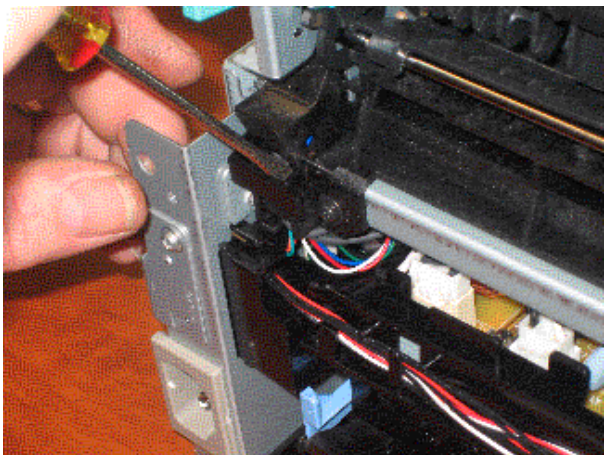
Move tab away from shaft then slide gear off shaft.



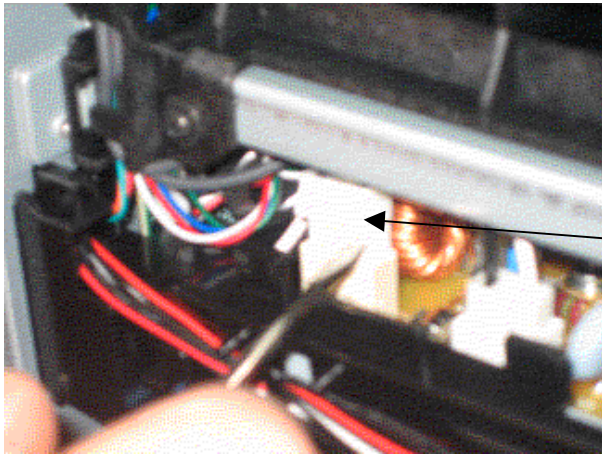
Remove fuser screw
upper left side.



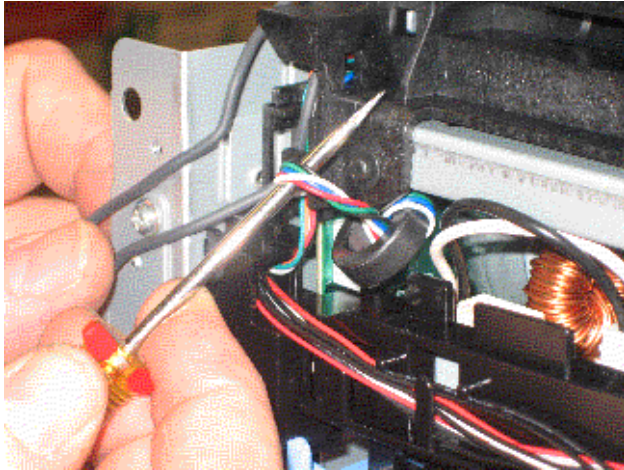
Remove fuser screw
lower left side.



Remove Harness housing.



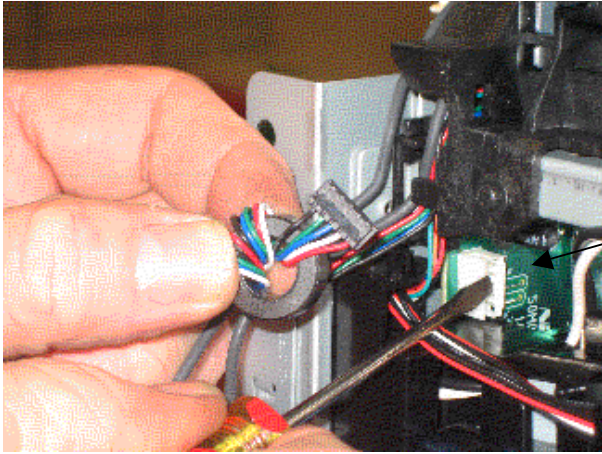
Unplug fuser power plug.



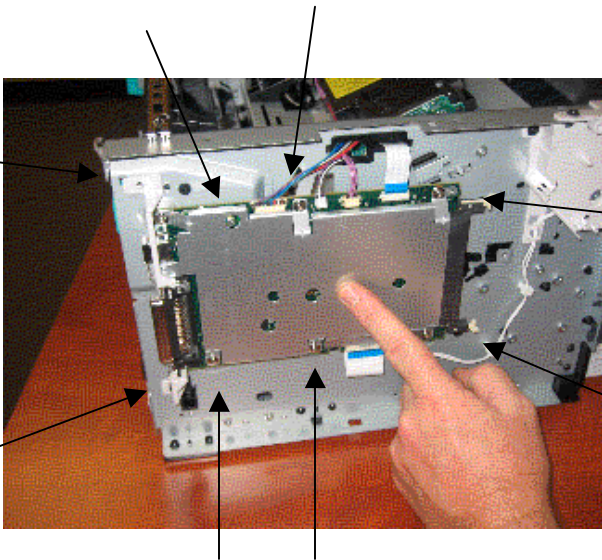
Remove Harness Plug
from left side-wall.

Continue to next page

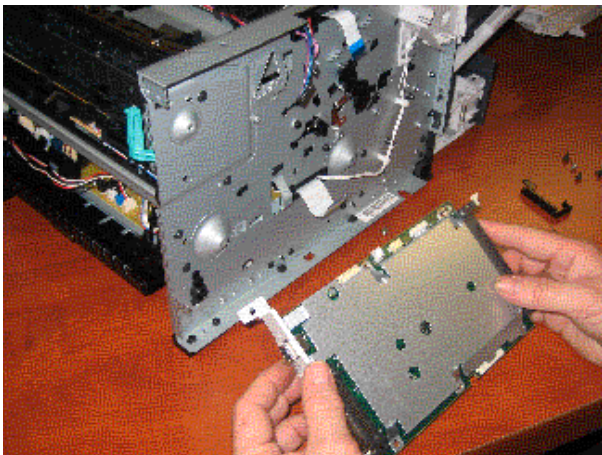




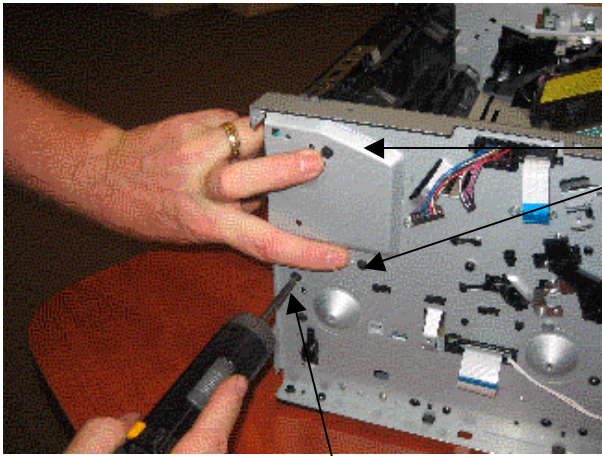
Plug for harness is inside wall.



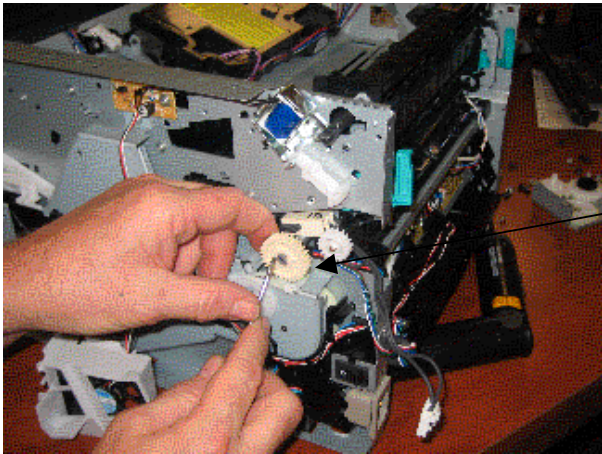
Unplug all the cable harnesses from the formatter board, then remove all the screws.



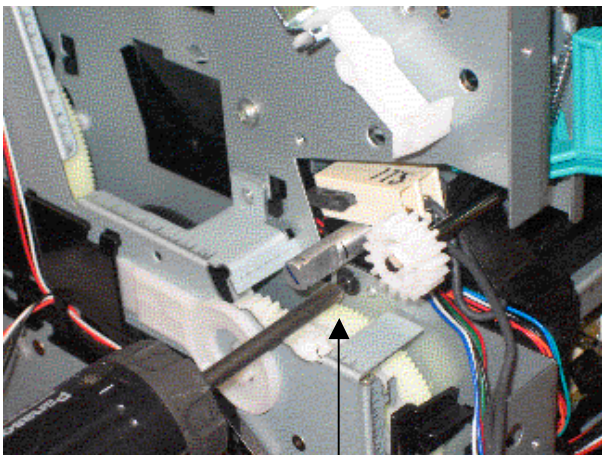
Set formatter board of to the side.



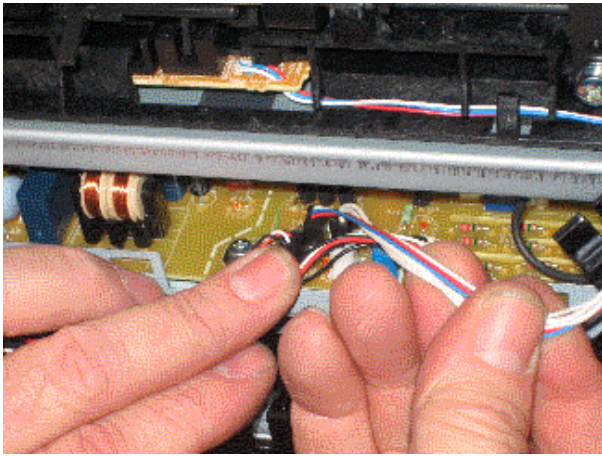
Remove right side screws from fuser.



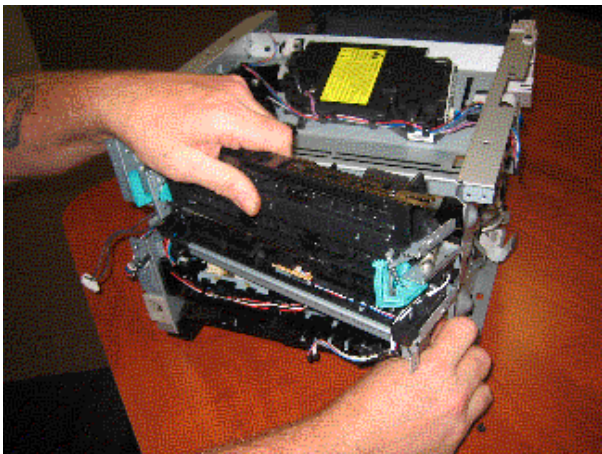
Remove left side fuser gear.



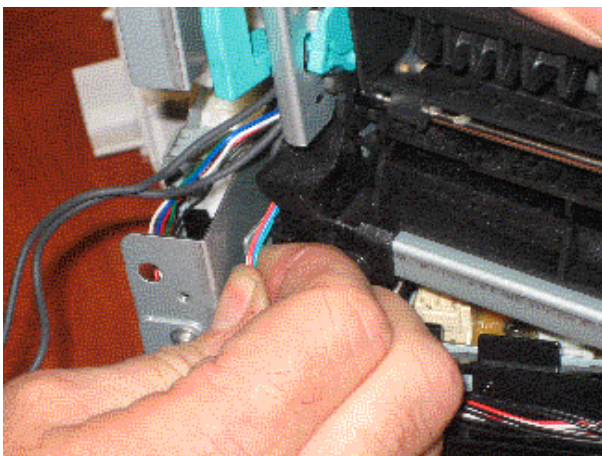
Remove left side fuser screw (was behind the gear that you just removed).



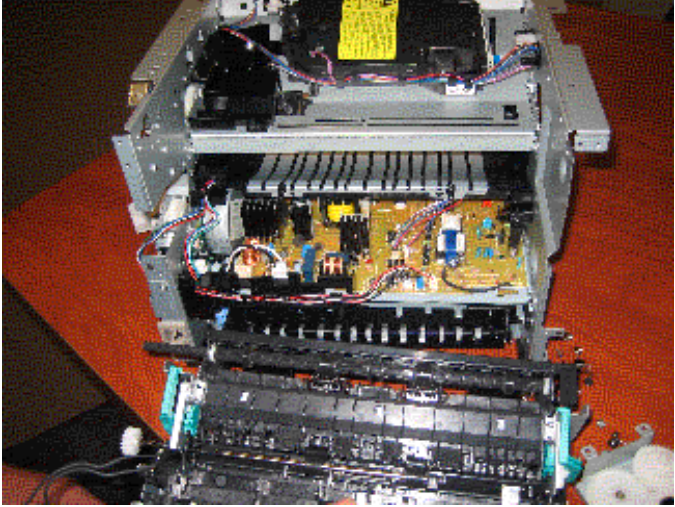
Unplug the 2 right side harnesses from main board.



Slide fuser out from right side.



Thread left side cables from harness guide on left side of fuser, and work fuser completely out.



Follow these steps in reverse in order to install new fuser.